



**Sn = 5 mm**

**W I R E**

- Voltage supply range +Vs 10 ... 50 VDC
- Extra flat version
- 4 port LED



**general data**

mounting type	shielded
nominal sensing distance Sn	5 mm
hysteresis	3 ... 20 % of Sr
output indicator	4 port LED red

**electrical data**

switching frequency	< 1 kHz
voltage supply range +Vs	10 ... 50 VDC
current consumption max.	10 mA
voltage drop Vd	< 3 VDC
output current	< 200 mA
short circuit protection	yes
reverse polarity protection	yes

**mechanical data**

type	rectangular
material (sensing face)	PBT
housing material	brass nickel plated
dimension	20 mm
housing length	32 mm
connection types	connector M8

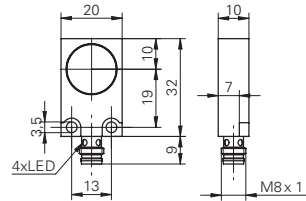
**ambient conditions**

operating temperature	-25 ... +75 °C
protection class	IP 67

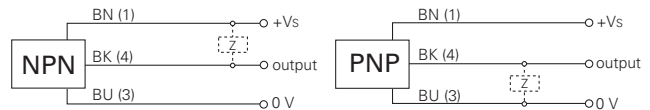
**accessories**

connectors	ESG 32S, ESW 31S
------------	------------------

**dimension drawing**



**connection diagrams**



**order reference      output circuit**

<b>IFFM 20N1501/S35L</b>	NPN make function (NO)
<b>IFFM 20N3501/S35L</b>	NPN break function (NC)
<b>IFFM 20P1501/S35L</b>	PNP make function (NO)
<b>IFFM 20P3501/S35L</b>	PNP break function (NC)

IFFM 20 Sn = 5 mm

Inductive sensors 3-wire digital output



**Sn = 8 mm**

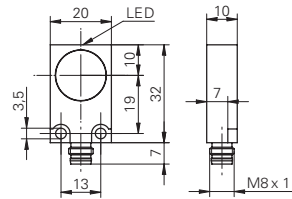
**WIRE**

- Increased sensing distance
- Extra flat version

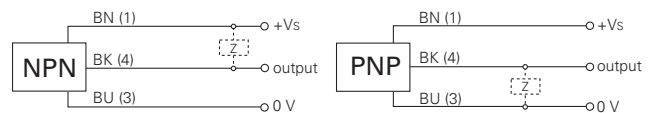


general data	
mounting type	shielded
nominal sensing distance Sn	8 mm
hysteresis	3 ... 20 % of Sr
output indicator	LED red
electrical data	
switching frequency	< 500 Hz
voltage supply range +Vs	10 ... 30 VDC
current consumption max.	10 mA
voltage drop Vd	< 2 VDC
output current	< 200 mA
short circuit protection	yes
reverse polarity protection	yes
mechanical data	
type	rectangular
material (sensing face)	PBT
housing material	brass nickel plated
dimension	20 mm
housing length	32 mm
connection types	connector M8
ambient conditions	
operating temperature	-25 ... +75 °C
protection class	IP 67
accessories	
connectors	ESG 32S, ESW 31S

### dimension drawing



### connection diagrams



order reference	output circuit
IFFM 20N17A3/S35L	NPN make function (NO)
IFFM 20N37A3/S35L	NPN break function (NC)
IFFM 20P17A3/S35L	PNP make function (NO)
IFFM 20P37A3/S35L	PNP break function (NC)